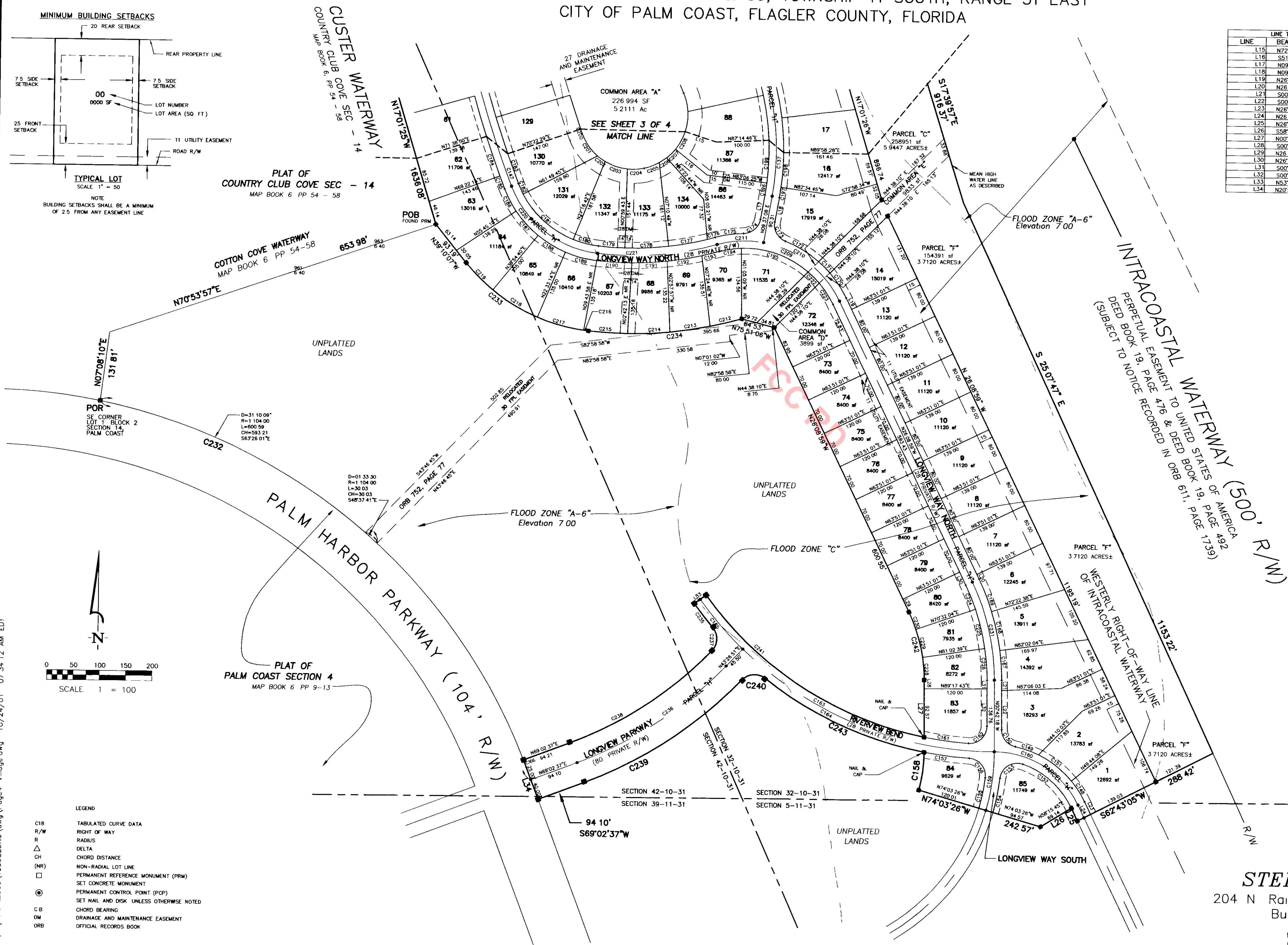


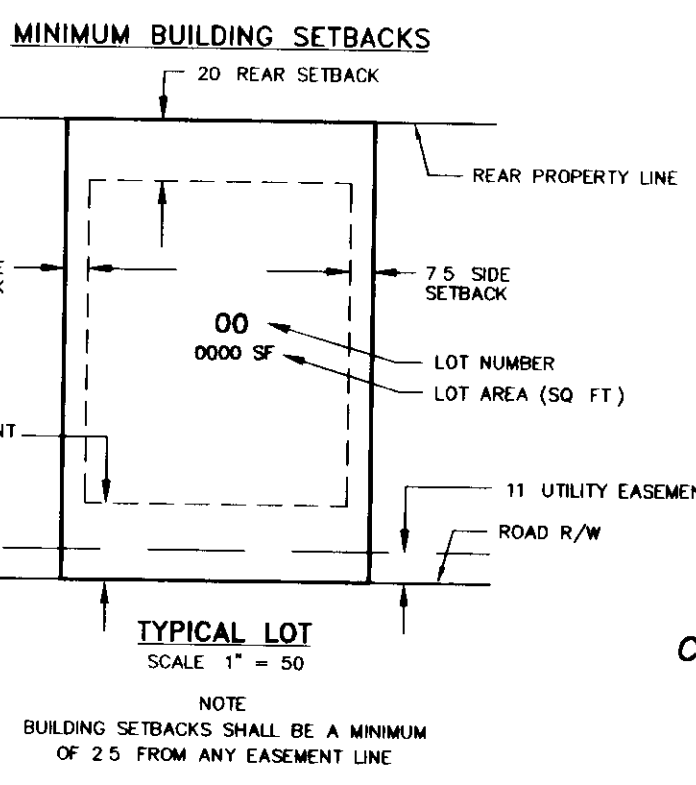
VILLAGE AT PALM COAST, PHASE I

A SUBDIVISION LYING IN GOVERNMENT SECTIONS 32 & 42, TOWNSHIP 10 SOUTH, RANGE 31 EAST, AND SECTIONS 5 & 39, TOWNSHIP 11 SOUTH, RANGE 31 EAST CITY OF PALM COAST, FLAGLER COUNTY, FLORIDA



LINE	BEARING	LENGTH
L15	N72°31'07"W	63.23
L16	S51°34'41"E	77.81
L17	N09°37'08"E	47.83
L18	N09°37'08"E	47.83
L19	N26°08'59"W	24.06
L20	N26°08'59"W	9.39
L21	S00°42'18"E	19.85
L22	S00°42'18"E	74.89
L23	N26°08'59"W	26.46
L24	N26°08'59"W	26.73
L25	N26°08'59"W	27.01
L26	S58°15'45"W	69.14
L27	N00°42'18"W	109.34
L28	S00°42'18"E	16.77
L29	N26°08'59"W	27.60
L30	N26°08'59"W	27.60
L31	S00°42'18"E	16.78
L32	S00°42'18"E	71.26
L33	N5°35'40"E	28.00
L34	N20°57'23"W	65.00

CURVE	RADIUS	DELTA	CURVE TABLE		
			LENGTH	CHORD	CHORD BEARING
C148	191.20	14.06 53"	47.10	46.98	N33.12 25"W
C149	191.20	14.07 07"	47.11	46.99	N71.32 42"W
C150	33.00	77.53 57"	44.87	41.49	S39.39 17"E
C151	191.20	24.13 17"	80.83	80.23	N52.22 30"W
C152	163.20	44.57 46"	128.07	124.81	N48.37 51"W
C153	33.00	102.35 05"	59.08	51.50	S57.35 43"W
C154	414.00	09.12 38"	66.55	66.48	N10.54 30"E
C155	690.00	08.48 48"	59.37	59.32	N08.48 48"E
C156	33.00	93.29 25"	53.85	48.07	N40.04 34"W
C157	704.00	07.05 21"	87.10	87.05	S83.16 36"E
C158	266.00	15.44 12"	73.06	72.83	N07.24 23"E
C159	400.00	16.11 21"	113.02	119.25	N07.23 27"E
C160	177.20	64.33 51"	199.85	189.26	N58.25 39"W
C161	676.00	07.14 29"	85.44	85.38	S82.53 34"E
C162	63.00	94.11 30"	54.25	48.34	N46.23 27"E
C163	690.00	54.32 58"	66.93	63.40	S63.25 49"E
C164	690.00	44.09 09"	531.72	518.66	S68.37 44"E
C165	690.00	10.23 49"	125.21	125.04	S41.21 15"E
C166	1104.00	00.46 43"	15.00	15.00	N21.20 44"W
C167	450.19	07.15 38"	57.03	57.01	N04.20 07"W
C168	450.19	09.39 27"	75.88	75.79	N12.47 39"W
C169	450.19	08.31 37"	67.00	66.94	N21.53 11"W
C170	214.00	15.11 41"	56.75	56.59	N33.44 50"W
C171	214.00	30.02 19"	30.02	30.00	N45.21 50"W
C172	214.00	20.01 43"	74.81	74.43	N52.51 57"W
C173	33.00	79.01 50"	45.52	41.99	S29.53 47"E
C174	33.00	79.01 50"	45.52	41.99	N49.08 03"E
C175	214.00	14.12 21"	54.86	54.71	S81.18 18"W
C176	586.00	01.31 17"	15.56	15.56	N74.43 15"E
C177	586.00	07.20 17"	75.05	75.00	N79.09 03"E
C178	586.00	08.10 31"	83.61	83.54	N86.54 27"E
C179	586.00	04.57 29"	50.69	50.67	S86.31 37"E
C180	186.00	15.19 37"	49.78	49.61	S78.23 07"E
C181	186.00	40.33 04"	131.64	128.91	S48.26 47"E
C182	186.00	08.47 44"	22.06	22.05	S24.46 22"E
C183	186.00	02.16 35"	80.85	80.85	S19.29 28"E
C184	2014.00	02.16 35"	80.01	80.01	S48.26 47"E
C185	2014.00	00.44 45"	26.22	26.22	S21.00 08"E
C186	214.00	12.52 20"	48.08	47.98	S27.48 40"E
C187	214.00	16.50 30"	60.65	60.65	S42.40 05"E
C188	214.00	16.21 26"	61.09	60.89	S59.16 03"E
C189	214.00	16.36 09"	62.01	61.79	S75.44 51"E
C190	614.00	06.16 47"	67.30	67.26	S87.11 19"E
C191	614.00	06.16 47"	67.30	67.26	N86.31 54"E
C192	614.00	06.16 47"	67.30	67.26	N87.15 07"E
C193	614.00	03.09 07"	33.78	33.77	N75.32 10"E
C194	186.00	13.15 39"	43.05	42.95	S80.35 26"W
C195	186.00	42.47 23"	138.91	135.70	N71.03 05"E
C196	486.00	02.43 53"	23.12	23.12	N08.15 17"E
C197	514.00	02.11 53"	19.72	19.72	N08.31 11"E
C198	486.00	07.28 46"	66.80	66.75	N03.41 51"E
C199	486.00	02.38 49"	81.83	81.73	N02.04 11"E
C200	1839.00	00.14 56"	7.98	7.98	S19.44 50"E
C201	103.00	29.39 20"	53.31	52.72	S34.42 06"E
C202	103.00	09.51 51"	17.73	17.71	S72.00 29"E
C203	103.00	29.39 21"	45.35	44.99	N27.42 43"E
C204	103.00	17.37 41"	31.69	31.56	N89.14 49"E
C205	105.00	17.04 27"	31.29	31.17	N89.12 45"E
C206	105.00	09.20 10"	17.11	17.09	N56.00 27"E
C207	105.00	12.25 03"	23.67	23.62	N44.92 50"E
C208	105.00	20.56 26"	38.38	38.16	N27.70 05"E
C209	200.00	79.53 24"	278.87	256.82	N66.05 41"W
C210	200.00	54.13 53"	189.30	182.32	N53.15 56"W
C211	200.00	29.39 21"	89.57	88.82	S85.47 22"W
C212	749.00	04.44 55"	62.08	62.06	N74.43 15"E
C213	749.00	05.56 52"	77.75	77.72	N81.04 30"E
C214	749.00	06.10 10"	80.85	80.61	N87.08 01"E
C215	749.00	09.43 58"	74.94	74.91	S85.54 55"E
C216	349.00	01.27 50"	8.92	8.92	S83.19 01"E
C217	349.00	15.08 19"	92.21	91.94	S75.00 56"E
C218	349.00	15.21 26"	99.64	99.30	S59.16 03"E
C219	349.00	11.55 14"	72.61	72.48	S45.07 44"E
C220	200.00	62.40 26"	218.77	208.03	N84.57 21"E
C221	600.00	21.59 27"	230.29	228.88	N84.57 21"E
C222	186.00	09.19 05"	30.03	30.00	N45.21 50"W
C223	186.00	14.35 18"	47.36	47.23	N33.25 38"W
C224	422.19	06.38 36"	49.57	49.54	N27.47 11"E
C225	422.19	10.28 02"	77.13	77.02	N14.11 22"W
C226	422.19	08.15 03"	80.80	80.74	N04.49 49"W
C227	302.19	26.21 43"	133.76	132.67	N13.23 08"W
C228	302.19	08.15 03"	43.52	43.48	N04.49 50"W
C229	302.19	10.27 01"	55.12	55.04	N14.10 52"W
C230	302.19	08.44 37"	35.57	35.55	N27.44 41"W
C231	436.19	29.26 41"	193.71	192.12	N13.23 08"W
C232	1104.00	57.17 00"	1103.76	1058.36	N56.26 37"E
C233	349.00	44.52 49"	273.37	266.44	N61.36 31"W
C234	749.00	22.35 55"	295.42	293.51	S84.39 07"W
C235	704.00	04.42 44"	57.90	57.86	N36.36 42"W
C236	765.28	25.35 46"	341.88	339.04	N56.14 44"E
C237	33.00	84.08 22"	48.46	44.22	N01.12 07"E
C238	725.28	29.48 19"	326.24	323.49	N56.09 27"E
C239	805.28	29.44 29"	361.79	358.71	S56.10 23"W
C240	33.00	84.27 39"	48.65	44.36	S85.31 58"W
C241	676.00	43.06 59"	508.71	496.79	S57.42 50"E
C242	302.19	29.26 41"	134.20	133.10	N13.25 39"W
C243	704.00	27.29 44"	337.84	334.61	N69.59 04"W



PLAT OF COUNTRY CLUB COVE SEC - 14
MAP BOOK 6 PP 54 - 58

PLAT OF PALM COAST SECTION 4
MAP BOOK 6 PP 9 - 13

- LEGEND
- C18 TABULATED CURVE DATA
 - R/W RIGHT OF WAY
 - R RADIUS
 - Δ DELTA
 - CH CHORD DISTANCE
 - (NR) NON-RADIAL LOT LINE
 - PERMANENT REFERENCE MONUMENT (PRM)
 - SET CONCRETE MONUMENT
 - PERMANENT CONTROL POINT (PCP)
 - SET NAIL AND DISK UNLESS OTHERWISE NOTED
 - CB CHORD BEARING
 - DM DRAINAGE AND MAINTENANCE EASEMENT
 - ORB OFFICIAL RECORDS BOOK

STEPHENSON SURVEYING, INC.
 204 N Railroad St P O Box 1836 Bunnell, FL 32110
 Bunnell (386)437-2363 (LB#6422)

NOTICE THERE MAY BE ADDITIONAL RESTRICTIONS THAT ARE NOT RECORDED ON THIS PLAT THAT MAY BE FOUND IN THE PUBLIC RECORDS OF THIS COUNTY