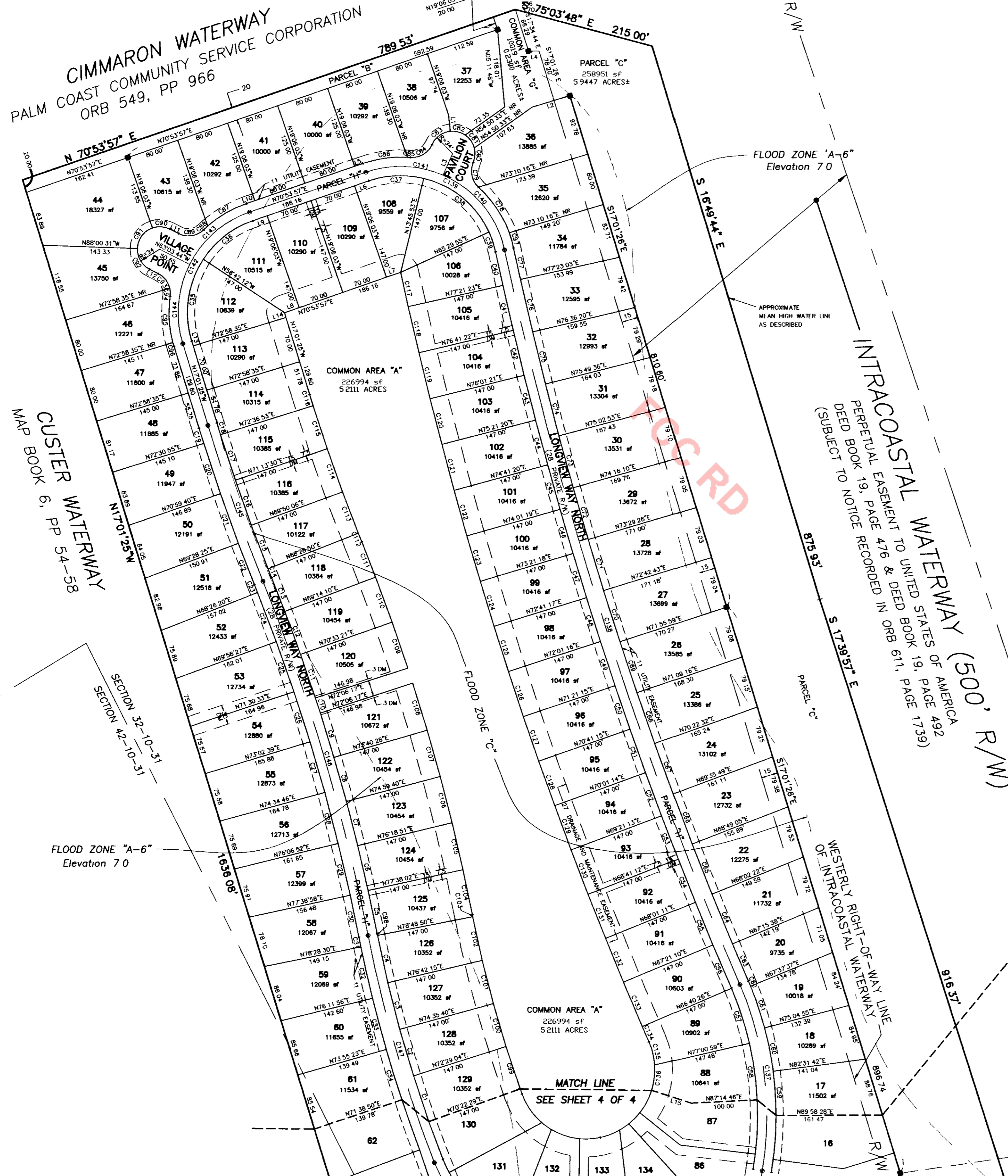
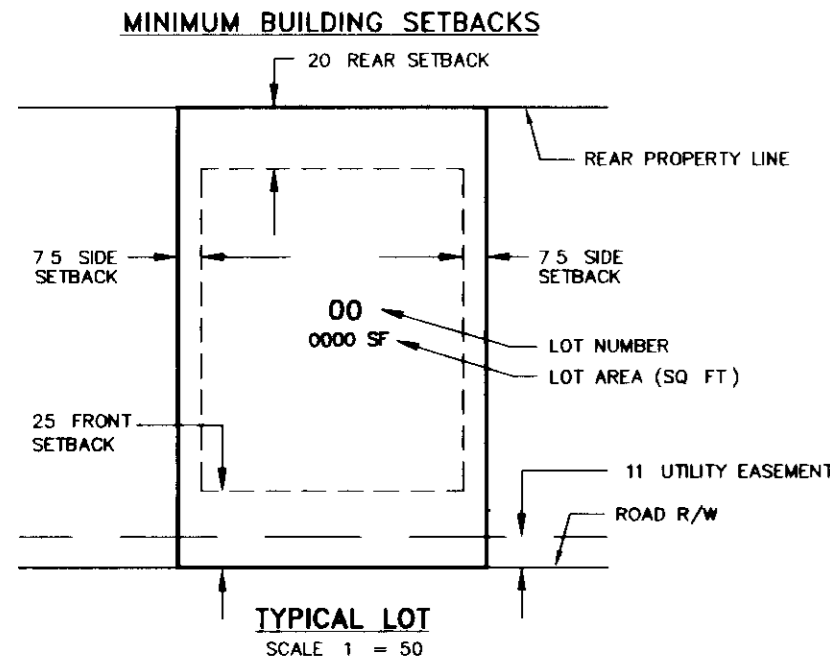


# VILLAGE AT PALM COAST, PHASE I

A SUBDIVISION LYING IN GOVERNMENT SECTIONS 32 & 42, TOWNSHIP 10 SOUTH, RANGE 31 EAST, AND SECTIONS 5 & 39, TOWNSHIP 11 SOUTH, RANGE 31 EAST, CITY OF PALM COAST, FLAGLER COUNTY, FLORIDA



CURVE TABLE						
CURVE	RADIUS	DELTA	LENGTH	CHORD	CHORD BEARING	
C1	1986.00	02°06'35"	73.13	73.13	S18°34'13"E	
C2	1986.00	02°06'35"	73.13	73.13	S16°27'38"E	
C3	1986.00	02°06'35"	73.13	73.13	S14°21'03"E	
C4	1986.00	02°06'35"	73.13	73.13	S12°14'27"E	
C5	3014.00	01°15'54"	66.54	66.54	N11°44'01"W	
C6	3014.00	01°15'11"	69.42	69.42	N13°01'34"W	
C7	3014.00	01°19'11"	69.42	69.42	N14°20'45"W	
C8	3014.00	01°19'11"	69.42	69.42	N15°39'56"W	
C9	3014.00	01°20'30"	70.58	70.58	N16°59'47"W	
C10	3014.00	00°27'22"	24.00	24.00	N17°53'43"W	
C11	3014.00	01°19'15"	69.48	69.47	N18°47'02"W	
C12	3014.00	01°19'11"	69.43	69.42	N20°06'15"W	
C13	3014.00	01°02'29"	54.78	54.78	N21°17'04"W	
C14	2986.00	00°17'09"	14.90	14.90	S21°59'44"E	
C15	2986.00	01°21'18"	70.59	70.59	S20°50'32"E	
C16	2986.00	01°23'23"	72.43	72.43	S19°28'12"E	
C17	2986.00	01°23'23"	72.43	72.43	S18°04'49"E	
C18	2986.00	00°21'42"	18.85	18.85	S17°12'16"E	
C19	3014.00	00°27'40"	24.25	24.25	S17°15'15"E	
C20	3014.00	01°31'15"	80.00	80.00	S18°14'42"E	
C21	3014.00	01°31'15"	80.00	80.00	S19°45'57"E	
C22	3014.00	01°16'44"	67.27	67.27	S20°06'35"E	
C23	2986.00	00°14'39"	12.73	12.73	N21°40'58"W	
C24	2986.00	01°32'06"	80.00	80.00	N20°47'38"W	
C25	2986.00	01°32'06"	80.00	80.00	N19°15'30"W	
C26	2986.00	01°32'06"	80.00	80.00	N17°43'24"W	
C27	2986.00	01°32'06"	80.00	80.00	N16°11'17"W	
C28	2986.00	01°32'06"	80.00	80.00	N14°39'11"W	
C29	2986.00	01°32'06"	80.00	80.00	N13°07'05"W	
C30	2986.00	01°14'57"	65.11	65.10	N11°43'33"W	
C31	2014.00	00°25'26"	14.90	14.90	S11°18'47"E	
C32	2014.00	00°25'26"	14.90	14.90	S12°59'47"E	
C33	2014.00	00°25'26"	14.90	14.90	S14°56'21"E	
C34	2014.00	00°25'26"	14.90	14.90	S17°12'54"E	
C35	147.00	50°19'13"	129.10	124.99	S08°08'12"W	
C36	147.00	37°36'08"	86.47	84.75	S22°05'33"W	
C37	147.00	32°51'56"	84.32	83.17	S27°18'55"W	
C38	147.00	51°44'01"	132.73	128.27	S50°22'06"W	
C39	147.00	12°21'02"	31.69	31.63	N18°19'34"W	
C40	6014.00	00°29'34"	51.74	51.74	S12°23'50"E	
C41	6014.00	00°40'01"	70.00	70.00	S12°58'38"E	
C42	6014.00	00°40'01"	70.00	70.00	S13°38'38"E	
C43	6014.00	00°40'01"	70.00	70.00	S14'18'39"E	
C44	6014.00	00°40'01"	70.00	70.00	S14°58'40"E	
C45	6014.00	00°40'01"	70.00	70.00	S15°38'41"E	
C46	6014.00	00°40'01"	70.00	70.00	S16'18'42"E	
C47	6014.00	00°40'01"	70.00	70.00	S16°58'43"E	
C48	6014.00	00°40'01"	70.00	70.00	S17°38'43"E	
C49	6014.00	00°40'01"	70.00	70.00	S18°18'44"E	
C50	6014.00	00°40'01"	70.00	70.00	S18°58'45"E	
C51	6014.00	00°40'01"	70.00	70.00	S19°38'46"E	
C52	6014.00	00°40'01"	70.00	70.00	S20°18'47"E	
C53	6014.00	00°40'01"	70.00	70.00	S20°58'48"E	
C54	6014.00	00°40'01"	70.00	70.00	S21'38'48"E	
C55	6014.00	00°40'01"	70.00	70.00	S22'18'49"E	
C56	6014.00	00°40'01"	71.26	71.26	S22°59'12"E	
C57	486.00	10°20'33"	87.73	87.61	N18°09'17"W	
C58	486.00	10°21'47"	86.77	86.66	N17°52'07"W	
C59	514.00	07°28'46"	66.80	66.75	N17°34'55"W	
C60	514.00	07°28'46"	66.80	66.75	N17°11'42"W	
C61	514.00	07°27'19"	66.88	66.83	N16°58'44"W	
C62	514.00	00°57'10"	8.55	8.55	N22°50'59"W	
C63	5986.00	00°35'12"	61.29	61.29	S23°01'58"E	
C64	5986.00	00°46'43"	81.36	81.36	S22°21'00"E	
C65	5986.00	00°46'43"	81.36	81.36	S21'34'16"E	
C66	5986.00	00°46'43"	81.36	81.36	S20°47'33"E	
C67	5986.00	00°46'43"	81.36	81.36	S20°00'50"E	
C68	5986.00	00°46'43"	81.36	81.36	S19°14'06"E	
C69	5986.00	00°46'43"	81.36	81.36	S18°27'23"E	
C70	5986.00	00°46'43"	81.36	81.36	S17°40'39"E	
C71	5986.00	00°46'43"	81.36	81.36	S16°53'54"E	
C72	5986.00	00°46'43"	81.36	81.36	S16°07'12"E	
C73	5986.00	00°46'43"	81.36	81.36	S15°20'29"E	
C74	5986.00	00°46'43"	81.36	81.36	S14°33'45"E	
C75	5986.00	00°46'43"	81.36	81.36	S13°47'02"E	
C76	5986.00	00°46'43"	81.36	81.36	S13°00'18"E	
C77	5986.00	00°27'54"	48.58	48.58	S12°23'00"E	
C78	175.00	07°29'26"	84.47	83.66	N33°49'52"W	
C79	33.00	71°12'33"	41.01	38.42	S12°03'19"E	

CURVE TABLE						
CURVE	RADIUS	DELTA	LENGTH	CHORD	CHORD BEARING	
C80	34.00	08°02'22"	22.57	22.16	N04°31'46"E	
C81	34.00	41°20'05"	24.53	24.00	N55°09'27"W	
C82	34.00	40°02'23"	23.78	23.28	N75°50'41"W	
C83	34.00	60°35'10"	35.95	34.30	S53°50'32"W	
C84	33.00	71°12'33"	41.01	38.42	N59°09'14"E	
C85	175.00	01°22'34"	4.20	4.20	N85°55'47"W	
C86	175.00	22°28'59"	68.73	68.73	S82°08'27"W	
C87	175.00	22°28'59"	68.67	68.23	S59°39'27"W	
C88	175.00	02°41'15"	8.21	8.21	S47°04'21"W	
C89	33.00	71°12'33"	41.01	38.42	N81°20'00"E	
C90	34.00	46°02'19"	27.32	26.59	N85°04'54"W	
C91	34.00	68°54'28"	40.89	38.47	S36°26'43"W	
C92	34.00	65°03'13"	38.60	36.56	S30°32'08"E	
C93	33.00	50°04'13"	28.84	27.93	N38°01'37"W	
C94	33.00	21°08'19"	12.18	12.18	N02°25'21"W	
C95	175.00	23°09'30"	70.73	70.25	S03°25'56"E	
C96	175.00	02°06'44"	6.15	6.15	S16°01'03"E	
C97	175.00	07°51'07"	23.98	23.96	N16°04'36"W	
C98	1986.00	00°05'06"	2.94	2.94	S11°08'37"E	
C99	1839.00	02°06'35"	67.71	67.71	S18°54'37"E	
C100	1839.00	02°06'35"	67.72	67.71	S16°27'38"E	
C101	1839.00	02°06'35"	67.72	67.71	S14°21'03"E	
C102	1839.00	02°06'35"	67.72	67.71	S12°14'27"E	
C103	1839.00	00°25'06"	2.72	2.72	S11°08'37"E	
C104	3161.00	01°15'54"	69.79	69.79	N11°44'01"W	
C105	3161.00	01°19'11"	72.81	72.81	N13°01'34"W	
C106	3161.00	01°19'11"	72.81	72.81	N14°20'45"W	
C107	3161.00	01°19'11"	72.81	72.81	N15°39'56"W	
C108	3161.00	01°21'09"	74.61	74.61	N17°00'06"W	
C109	3161.00	01°19'53"	73.45	73.45	N18°46'43"W	
C110	3161.00	01°19'11"	72.81	72.81	N20°06'15"W	
C111	3161.00	01°28'29"	57.45	57.45	N21°17'04"W	
C112	2839.00	00°09'09"	14.16	14.16	S21°39'44"E	
C113	2839.00	01°21'16"	67.12	67.12	S20°50'32"E	
C114	2839.00	01°23'23"	68.86	68.86	S19°28'12"E	
C115	2839.00	01°23'23"	68.86	68.86	S18°04'49"E	
C116	2839.00	00°21'42"	17.83	17.83	S17°12'16"E	
C117	6161.00	00°29'34"	53.00	53.00	S12°23'50"E	
C118	6161.00	00°40'01"	71.71	71.71	S12°58'38"E	
C119	6161.00	00°40'01"	71.71	71.71	S13°38'38"E	
C120	6161.00	00°40'01"	71.71	71.71	S14'18'39"E	
C121	6161.00	00°40'01"	71.71	71.71	S14°58'40"E	
C122	6161.00	00°40'01"	71.71	71.71	S15°38'41"E	
C123	6161.00	00°40'01"	71.71	71.71	S16'18'42"E	
C124	6161.00	00°40'01"	71.71	71.71	S16°58'43"E	
C125	6161.00	00°40'01"	71.71	71.71	S17°38'43"E	
C126	6161.00	00°40'01"	71.71	71.71	S18'18'44"E	
C127	6161.00	00°40'01"	71.71	71.71	S18°58'45"E	
C128	6161.00	00°40'01"	71.71	71.71	S19°38'46"E	
C129	6161.00	00°40'01"	71.71	71.71	S20°18'47"E	
C130	6161.00	00°40'01"	71.71	71.71	S20°58'48"E	
C131	6161.00	00°40'01"	71.71	71.71	S21'38'48"E	
C132	6161.00	00°40'01"	71.71	71.71	S22'18'49"E	
C133	6161.00	00°40'01"	73.00	73.00	S22°59'12"E	
C134	6161.00	00°14'06"	25.27	25.27	S23'26'37"E	
C135	105.00	19°45'04"	36.20	36.02	N13°41'08"W	
C136	105.00	31°12'27"	39.02	38.79	N06°50'07"E	
C137	500.00	23°56'42"	287.50	283.55	N05°11'37"W	
C138	6000.00	11°10'31"	1170.27	1168.42	S17°44'18"E	
C139	161.00	95°57'00"	272.43	241.07	N60°37'33"W	
C140	161.00	54°18'00"	152.58	146.94	N39°18'03"W	
C141	161.00	42°39'00"	119.85	117.10	N87°46'33"W	
C142	161.00	87°55'22"	247.08	223.52	S28°56'16"W	
C143	161.00	43°57'41"	123.53	120.52	S48°55'06"W	
C144	161.00	43°57'41"	123.53	120.52	S04°57'25"W	
C145	3000.00	04°46'54"	250.36	250.29	S19°24'52"E	
C146	3000.00	10°42'15"	580.46	559.65	N18°27'12"W	
C147	2000.00	10°16'26"	358.63	358.15	S16°14'17"E	

LINE TABLE		
LINE	BEARING	LENGTH
L1	S05°51'53"E	25.00
L2	N73°10'16"E	59.64
L3	N23°32'52"E	35.91
L4	S89°26'16"W	16.00
L5	N70°53'57"E	13.08
L6	N70°53'57"E	22.80